

# Table of Contents

<b>1. Introduction</b> .....	<b>3</b>
1.1. Minimum System Requirements .....	4
1.1.1. Windows .....	4
1.2. Administrator.....	4
<b>2. Installing LaCie USB Boost</b> .....	<b>5</b>
2.1. Installation .....	5
<b>3. Selecting the Boost</b> .....	<b>6</b>
<b>4. Troubleshooting</b> .....	<b>7</b>
<b>5. Contacting Customer Support</b> .....	<b>8</b>
5.1. LaCie Technical Support Contacts .....	8

### Copyrights

Copyright © 2009 LaCie. All rights reserved. No part of this publication may be reproduced, stored in a retrieval system, or transmitted in any form or by any means, electronic, mechanical, photocopying, recording or otherwise, without the prior written consent of LaCie.

---

### Trademarks

Apple, Mac, Mac OS, and Macintosh are registered trademarks of Apple Inc. Microsoft, Windows 2000, Windows XP, Windows Vista, and Windows 7 are registered trademarks of Microsoft Corporation. Other trademarks mentioned in this manual are the property of their respective owners.

---

### Changes

The material in this document is for information only and subject to change without notice. While reasonable efforts have been made in the preparation of this document to assure its accuracy, LaCie assumes no liability resulting from errors or omissions in this document, or from the use of the information contained herein. LaCie reserves the right to make changes or revisions in the product design or the product manual without reservation and without obligation to notify any person of such revisions and changes.

---

## 1. Introduction

Thank you for choosing to install LaCie USB Boost. The LaCie USB Boost driver is simple to use and could enhance your USB 2.0 transfer rates up to 33%!

Once installed, the driver offers you the option to run at normal speeds, as with standard USB drivers, or to put the pedal on the gas and push your LaCie USB hard disk to run faster.

---

**IMPORTANT NOTE:** LaCie USB Boost is compatible with specific LaCie hard disk drives. Please visit [www.lacie.com](http://www.lacie.com) to see if your drive is compatible with LaCie USB Boost. Search for your drive in our list of products and note if the USB Boost icon is among those listed on the page.

---



# USB BOOST

### Quick Links

#### Click a topic:

- ◆ [Installing LaCie USB Boost](#)
- ◆ [Selecting the Boost](#)
- ◆ [Troubleshooting](#)

## 1.1. Minimum System Requirements

### 1.1.1. Windows

- ◆ Windows XP, 32 bit and 64 bit
- ◆ Windows Vista and Windows 7, 32 bit versions only.
- ◆ Hi-speed USB 2.0

---

**IMPORTANT NOTE:** LaCie USB Boost is not compatible with Macintosh and Linux operating systems and 64 bit versions of Windows Vista and Windows 7.

---

## 1.2. Administrator

In order to install the USB Boost driver, you must have Administrative rights to your computer.

---

## 2. Installing LaCie USB Boost

### 2.1. Installation

1. Locate the USB Boost icon in your LaCie Utilities folder on your newly purchased LaCie hard disk drive. You may also download the driver from the LaCie website: <http://www.lacie.com/support/drivers/driver.htm?id=10139>
2. Click twice on the USB Boost Setup.exe and follow the prompts.
3. Please note the window welcoming you to the LaCie USB Boost setup wizard. You must accept the conditions of the driver installation before moving to the next step. Click Install. (Fig. 01)
4. A few moments later the setup wizard will finish, prompting you to select Done. (Fig. 02)
5. As a final step, the installer sets the parameters of your hardware. (Fig. 03)

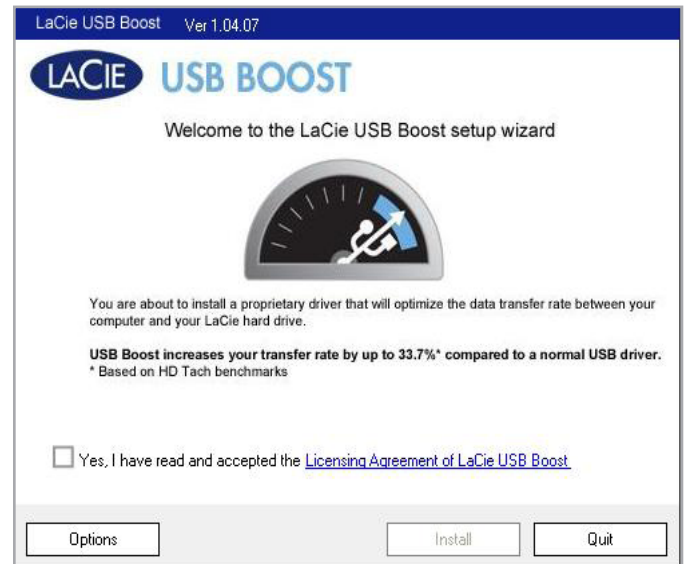


Fig. 01

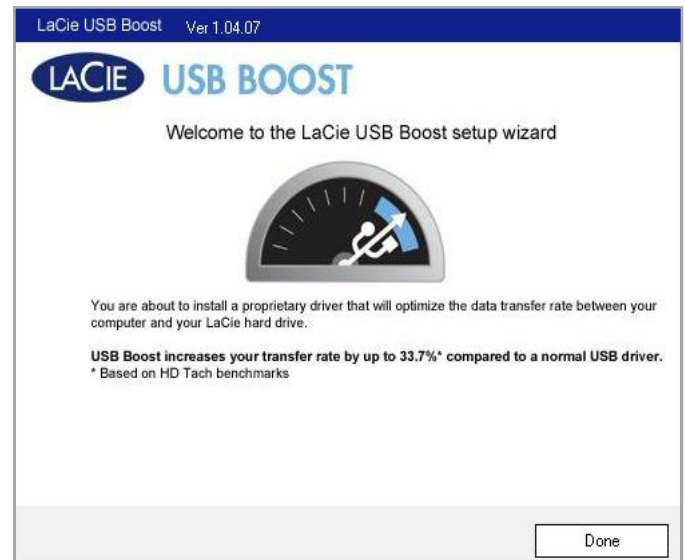


Fig. 02



Fig. 03

### 3. Selecting the Boost

Once LaCie USB Boost has been installed, you may choose how it will run.

1. Note the USB Boost icon within the Taskbar. (Fig. 04)
2. Right-click the USB Boost icon to see the options. The default setting is Normal, which means that the driver will not act to increase the speed of select LaCie hard drives. (Fig. 05)
3. Select Turbo to take advantage of the USB 2.0 speed enhancements offered by LaCie USB Boost.

---

**IMPORTANT NOTE:** LaCie recommends that you select Normal when operating drives that are not supported by LaCie USB Boost.

---

---

**IMPORTANT INFO:** Screenshots may be slightly different on your computer, depending on the operating system and personal settings.

---

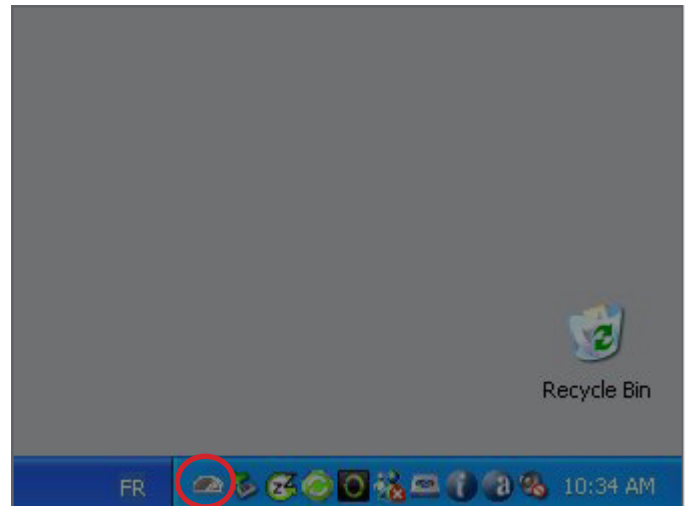


Fig. 04

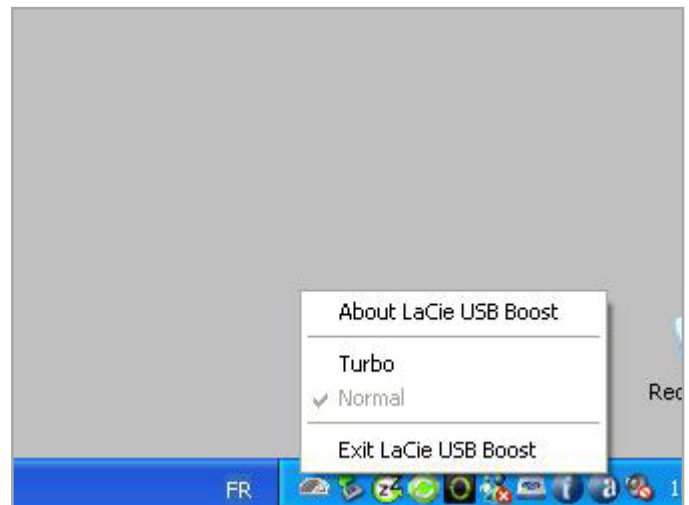


Fig. 05

## 4. Troubleshooting

If you encounter difficulties with the software, please consult the table below.

If you need further assistance, contact your LaCie reseller or LaCie Technical Support (see section [5. Contacting Customer Support](#) for details).

### Manual Updates

LaCie strives to give you the most up-to-date, comprehensive user manuals available on the market. It is our goal to provide you with a friendly, easy-to-use format that will help you quickly install and utilize the many functions of your new device.

If your user manual does not reflect the configuration of the product you purchased, please check our website for the most current version of the user manual.

[www.lacie.com](http://www.lacie.com)

Problem	Question	Answer
The USB Boost Setup.exe will not run on my computer or gives me an error?	Does your computer's configuration meet the minimum system requirements for use with this application?	Check section <a href="#">1.1. Minimum System Requirements</a> for more information.
My LaCie USB hard drive does not seem to offer faster USB transfer speeds.	Is the drive connected to your computer supported by LaCie USB Speed Boost?	LaCie USB Boost is compatible with specific LaCie hard disk drives. Please visit <a href="http://www.lacie.com">www.lacie.com</a> to see if your drive is compatible with LaCie USB Boost. Search for your drive in our list of products and note if the USB Boost icon is among those listed on the page.
	Have you selected Turbo?	Refer to section <a href="#">3. Selecting the Boost</a> .
	Are you using a USB 2.0 interface?	LaCie USB Boost is meant to work with specific USB hard disk drives connected to a USB 2.0 interface.
My USB 2.0 hard drive is transferring a bit faster but not 33%	Is your drive a LaCie hard drive supported by LaCie USB Boost?	LaCie offers no guarantee that LaCie USB Boost will increase USB transfer rates of non-LaCie hard drives. LaCie recommends that you choose Normal when using a non-LaCie drive.
	Do you mark a speed difference?	While certain benchmark tests have shown a USB 2.0 transfer rate improvement of 33%, LaCie cannot guarantee the same enhancements for each user.

## 5. Contacting Customer Support

### 5.1. LaCie Technical Support Contacts

LaCie Asia Contact us at: <a href="http://www.lacie.com/asia/contact/">http://www.lacie.com/asia/contact/</a>	LaCie Australia Contact us at: <a href="http://www.lacie.com/au/contact/">http://www.lacie.com/au/contact/</a>
LaCie Belgium Contact us at: <a href="http://www.lacie.com/be/contact/">http://www.lacie.com/be/contact/</a> (Français)	LaCie Canada Contact us at: <a href="http://www.lacie.com/caen/contact/">http://www.lacie.com/caen/contact/</a> (English)
LaCie Denmark Contact us at: <a href="http://www.lacie.com/dk/contact">http://www.lacie.com/dk/contact</a>	LaCie Finland Contact us at: <a href="http://www.lacie.com/fi/contact/">http://www.lacie.com/fi/contact/</a>
LaCie France Contact us at: <a href="http://www.lacie.com/fr/contact/">http://www.lacie.com/fr/contact/</a>	LaCie Germany Contact us at: <a href="http://www.lacie.com/de/contact/">http://www.lacie.com/de/contact/</a>
LaCie Italy Contact us at: <a href="http://www.lacie.com/it/contact/">http://www.lacie.com/it/contact/</a>	Japan - ELECOM CO. LTD Contact us at: <a href="http://www.lacie.com/jp">http://www.lacie.com/jp</a>
LaCie Netherlands Contact us at: <a href="http://www.lacie.com/nl/contact/">http://www.lacie.com/nl/contact/</a>	LaCie Norway Contact us at: <a href="http://www.lacie.com/no/contact/">http://www.lacie.com/no/contact/</a>
LaCie Spain Contact us at: <a href="http://www.lacie.com/es/contact/">http://www.lacie.com/es/contact/</a>	LaCie Sweden Contact us at: <a href="http://www.lacie.com/se/contact">http://www.lacie.com/se/contact</a>
LaCie Switzerland Contact us at: <a href="http://www.lacie.com/chfr/contact/">http://www.lacie.com/chfr/contact/</a> (Français)	LaCie United Kingdom Contact us at: <a href="http://www.lacie.com/uk/contact/">http://www.lacie.com/uk/contact/</a>
LaCie Ireland Contact us at: <a href="http://www.lacie.com/ie/contact/">http://www.lacie.com/ie/contact/</a>	LaCie USA Contact us at: <a href="http://www.lacie.com/contact/">http://www.lacie.com/contact/</a>
LaCie International Contact us at: <a href="http://www.lacie.com/intl/contact/">http://www.lacie.com/intl/contact/</a>	