

MixW RigExpert Tiny

CAT+PTT/CW

Version 1.3

User's manual

IMPORTANT:

*Read this manual carefully before
attempting to use
the MixW RigExpert Tiny device.*

Table of contents

Description	3
Specifications	4
Driver installation guide (Windows XP, Windows 2000)	5
Driver configuration guide (Windows XP, Windows 2000)	6
Driver installation guide (Windows 98)	7
Driver configuration guide (Windows 98)	8
Connecting computer and transceiver cables	9
Setting up software to operate using MixW RigExpert Tiny	9
Software setup example: MixW 2	10
Software setup example: MMTTY and DX4WIN	11



MixW RigExpert Tiny

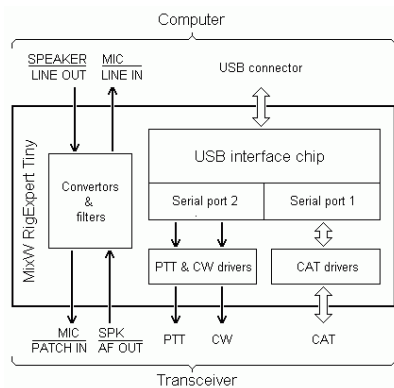
CAT+PTT/CW

USB Soundcard Transceiver Interface

Developed by the MixW team, the RigExpert Tiny is a revolutionary new sound card to transceiver interface. Combining complete functionality, simplicity of use, excellent design and low price, the RigExpert Tiny is perfect for all digital modes and CW/Phone. Models built for different transceivers like the Yaesu, Icom, Kenwood and Ten-Tec are now available.

The RigExpert Tiny interface provides a CAT port (transceiver frequency and mode control using a computer), a second serial port (PTT push-to-talk and/or CW output), as well as the soundcard-to-transceiver audio interface. The transceiver and computer connections are made using pre-wired cables for your specific rig. The computer connection uses the USB port, freeing up your serial (COM) ports for other needs. A separate power supply for the RigExpert Tiny interface is not needed as it is powered by your USB port. Five LED's on the top panel display the device status, helping set up the computer software and monitor functions during on-air operation.

The RigExpert Tiny interface is fully compatible with all amateur radio software running under Windows 98/ME/2000/XP/2003. Also supported are the Linux and MAC OS 8/9X operating systems. Software programs like DigiPan, MixW, MMTTY, MMSSTV, EchoLink, Ham Radio Deluxe, DXBase and CQ-Log just to name a few are fully supported.

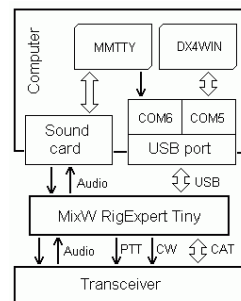


Tiny using the popular MMTTY and DX4WIN programs.

Two bi-directional voltage dividers are used in the audio signal I/O paths from the computer to transceiver providing fast and error free audio transfer. All input and output lines are fed through R/C filters to attain the highest interference and RFI suppression possible. The computer to transceiver cable length is 2.5m (8'2"). Needless to say, all cables are fully shielded.

A block diagram of the RigExpert Tiny is shown to the left. The "heart" of this unique interface is a dual-port USB converter chip. In this diagram, both ports are set up to operate in serial mode. One of the ports transmits and receives the CAT system data, while the other port drives the PTT and CW outputs. After the RigExpert Tiny is connected to the computer and the drivers are installed, two serial ports of your choosing (i.e. COM8 and COM9) are available for the software.

Two separate serial ports within the USB cable are just one of the many unique features of the RigExpert Tiny interface. The simultaneous use of two separate programs is an important asset to you as seen in the illustration to the right. One port operates the digital mode (driving the PTT and CW outputs). The other port controls your QSO logging software working with the CAT system. The diagram shows the RigExpert



For technical questions and purchasing information, please contact

- Victor, UT1UA (e-mail ut1ua@ln.ua) or Denis, UU9JDR (e-mail uu9jdr@ln.ua) - Ukraine, CIS, Baltic countries
- Arkady, RN6AM (e-mail rn6am@ts.kuban.ru) - Russia.
- Yuri, VE3DZ (Canada, e-mail ve3dz@rac.ca) - Canada.
- Konstantin, M0BDQ (England, e-mail mixw@btconnect.com) - UK and Europe.
- Glenn, W3GWW (USA, e-mail info@rigexpert.com) - USA

Our Internet page

<http://www.mixw.net/RigExpertTiny/>

Specifications

General functions

- Transceiver CAT (Computer Aided Transceiver) serial port
- Separate serial port with CW (Morse output) and PTT (Push-to-talk) output lines
- Sound card audio interface

Computer connection

- USB (Universal Serial Bus) connector
- 3.5 mm audio connectors for sound card input and output
- Two or more MixW RigExpert Tiny devices may be connected to a computer simultaneously. Please see the <http://mixw.net/RigExpertTiny/faq.html> page for details.

Transceiver connection

- Pre-wired cables with connector to go directly to transceiver sockets, depending on MixW RigExpert Tiny model
- Total cable length (computer to transceiver): 2.5 m

CAT serial port characteristics

- Baudrate: 300-115200 baud
- Selectable stop bit and parity parameters
- Electrical compatibility: RS-232, CI-V, TTL or inverted-TTL, depending on MixW RigExpert Tiny model

PTT/CW serial port characteristics

- PTT output is driven by RTS line
- CW output is driven by DTR line
- Electrical characteristics: open-collector outputs, max. 50 mA output

Sound card interface

- 1:10 resistor dividers at input and output lines

LED (Light-emitting diode) indicators on the top cover

- “A” – blinks when CAT data is sent from computer to transceiver
- “B” - blinks when transceiver replies a CAT command
- “PTT” - push-to-talk indicator
- “CW” - CW output indicator
- “ON” - device power indicator

System requirements

- Desktop or laptop Pentium computer with USB 1.1 or USB 2.0 compliant port
- Windows 98/ME/2000/XP/2003 operating system
- Linux or MAC OS 8/9/X supported (additional drivers required)

This guide describes Windows XP case. Windows 2000 setup is similar.

1. Insert the supplied disk (if available) into the drive.

2. Plug the MixW RigExpert Tiny device into computer USB port. The *ON* indicator should light up.



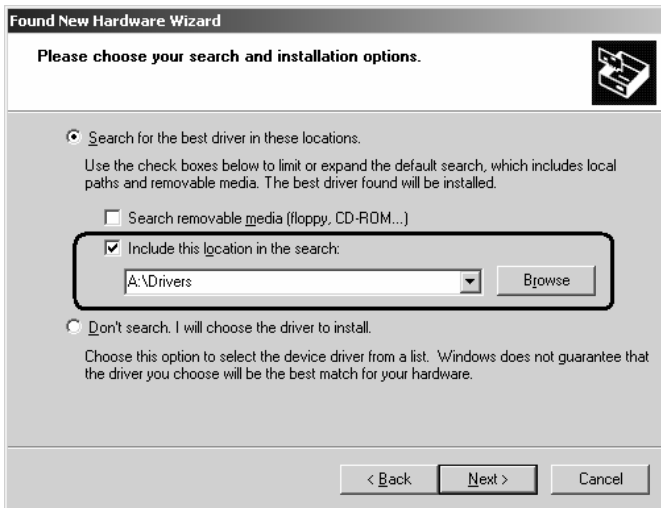
A *Found New Hardware (MixW RigExpert Tiny CAT+PTT/CW)* window will pop up on the computer screen.

3. A few seconds later, the *Found New Hardware Wizard* will start.



Select *Install from a list or specific location (Advanced)* and click *Next* to continue.

4. In the next window, check *Include this location in the search* and click *Browse* to browse for the drivers directory, then click *Next* to continue.



5. Click *Continue Anyway* if you see "*The software... has not passed Windows Logo testing ...*" pop-up window.



6. In the *Completing the Found New Hardware Wizard* window, click *Finish*.



7. Please repeat steps 4-6 when Windows finds MixW RigExpert Tiny subdevices.

8. Continue with driver settings (see the next page) when you see "*Your hardware is installed and ready to use*" message.

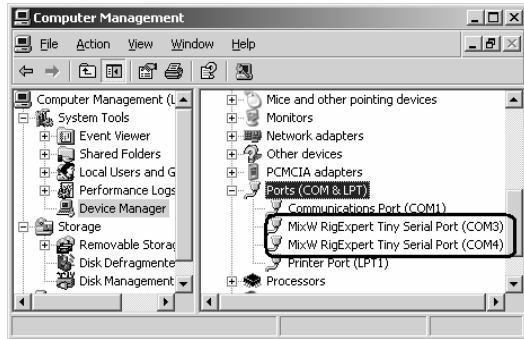


To **uninstall** the driver (if needed), please go to *Control Panel (Start button - Settings - Control Panel)*. Click *Add or Remove Programs* icon.

Select *MixW RigExpert Tiny CAT+PTT/CW Drivers* from the list and click *Change/Remove* button. It is necessary to unplug the device during the uninstallation procedure.

This guide describes Windows XP case. Windows 2000 setup is similar.

1. As a result of successful installation, you will see a new pair of serial ports in the *Device Manager* (right-click *My Computer* on the desktop, select *Manage* from the menu, select *Device Manager* from the list on the left side of the window, then open *Ports (COM&LPT)* branch on the right).



2. One of these new ports is a CAT port, and the other one is PTT/CW port. To view the RigExpert Tiny serial port assignment, please run the RETCOM program from *Start – Programs – RigExpert Tiny – Show RigExpert Tiny serial ports*:



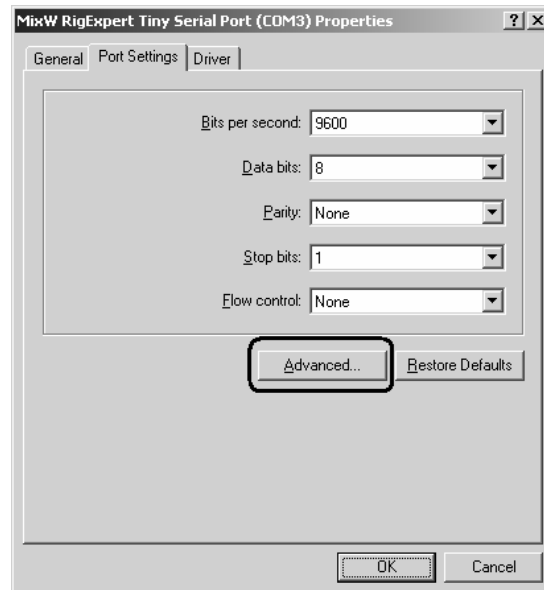
3. Please write down these port numbers (from step 2) on a piece of paper, like in this example:

CAT port: COM3
PTT/CW port: COM4

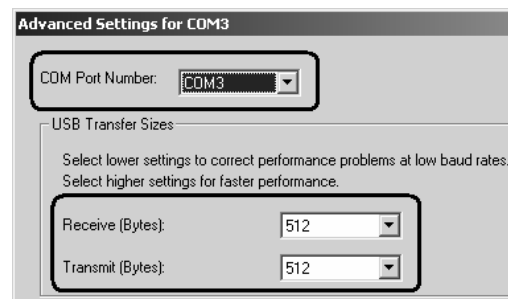
These numbers will be needed to set up your software.

4. Changing serial port numbers.

The serial port numbers are assigned automatically during driver installation. If you need to change their values, open *Device Manager*, right-click the *RigExpert Tiny Serial Port (COMxx)*, then select *Properties* from the menu. In the *RigExpert Tiny Serial Port (COMxx) Properties* dialog, activate *Port Settings* tab, then click *Advanced* button.



In the newly-open *Advanced Settings for COMx* dialog, select a new *COM Port Number*. (Please take into account that some software can only work with COM1...COM8 ports, other may be limited to COM1...COM4.)



Please leave all other settings unchanged. Click OK to apply the new port number settings.

5. Additional settings.

In rare cases, it is required to increase or decrease *USB Transfer sizes* in the *Advanced Settings for COMx* dialog for the PTT/CW port (see the picture above).

It is only needed if you are experiencing problems with PTT or CW outputs (for instance, delayed CW output, when “dit-dah” becomes “dah-dah”). The default settings are OK in most cases.

Please re-plug the MixW RigExpert Tiny device for this change to take effect.

1. Insert the supplied disk (if available) into the drive.

2. Plug the MixW RigExpert Tiny device into computer USB port. The **ON** indicator should light up.

3. A **Found New Hardware (MixW RigExpert Tiny CAT+PTT/CW)** window will pop up on the computer screen.

4. A few seconds later, the **Add New Hardware Wizard** will start. Click **Next** to continue.



5. In the next window, select **Search for the best driver for your device** and click **Next**.



6. Check **Specify a location** and click **Browse** to browse for the drivers directory, then click **Next** to continue.



7. Click **Next** when you see the **"Windows is now ready to install..."** window.



8. In the **"Windows has finished installing..."** window, click **Finish**.



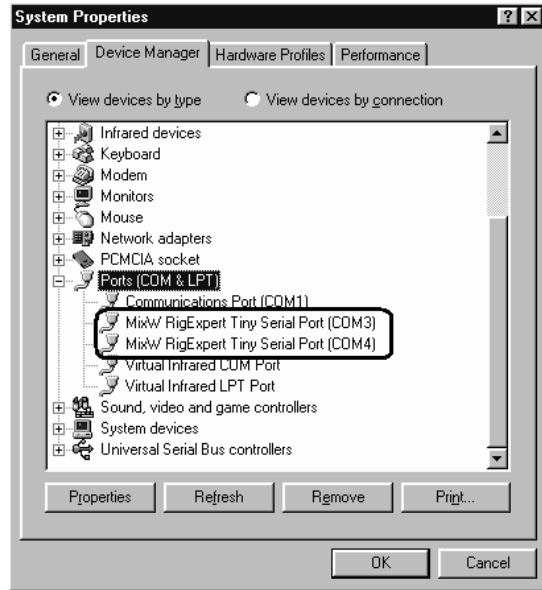
9. Please repeat steps 4-8 when Windows finds MixW RigExpert Tiny subdevices.

10. Now the drivers are installed and are ready to be configured (see the next page).

To **uninstall** the driver (if needed), please go to **Control Panel (Start button - Settings - Control Panel)**. Click **Add/Remove Programs** icon.

Select **MixW RigExpert Tiny CAT+PTT/CW Drivers** from the list and click **Add/Remove** button. It is necessary to unplug the device during the uninstallation procedure.

1. As a result of successful installation, you will see a new pair of serial ports in the *Device Manager* (right-click *My Computer* on the desktop, select *Properties* from the menu, then select *Device Manager* tab in the *System Properties* dialog. Open *Ports (COM & LPT)* branch in the device tree.)



2. One of these new ports is a CAT port, and the other one is PTT/CW port. To view the RigExpert Tiny serial port assignment, please run the RETCOM program from *Start – Programs – RigExpert Tiny – Show RigExpert Tiny serial ports*:



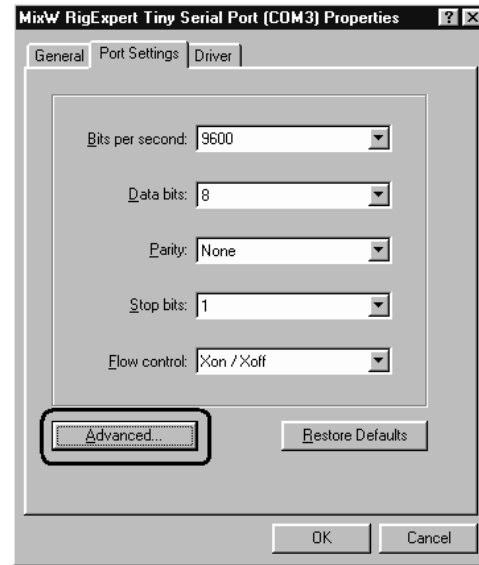
3. Please write down these port numbers (from step 2) on a piece of paper, like in this example:

CAT port: COM3
PTT/CW port: COM4

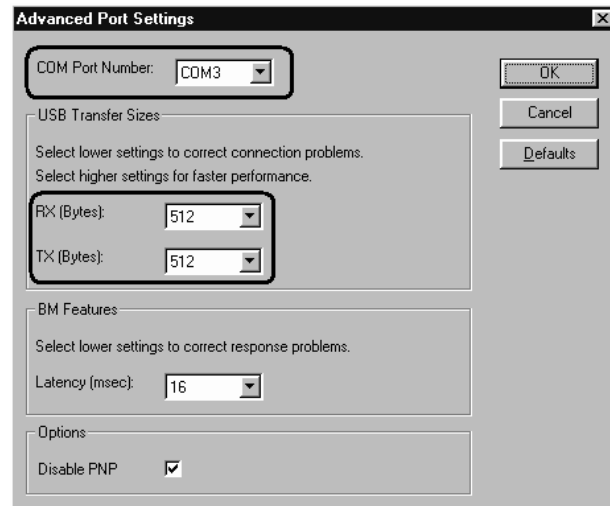
These numbers will be needed to set up your software.

4. Changing serial port numbers.

The serial port numbers are assigned automatically during driver installation. If you need to change their values, open *Device Manager*, right-click the *RigExpert Tiny Serial Port (COMxx)*, then select *Properties* from the menu. In the *RigExpert Tiny Serial Port (COMxx) Properties* dialog, activate *Port Settings* tab, then click *Advanced* button.



In the newly-open *Advanced Settings for COMx* dialog, select a new *COM Port Number*. Leave other settings unchanged.



5. Additional settings.

In rare cases, it is required to increase or decrease *USB Transfer sizes* in the *Advanced Settings for COMx* dialog for the PTT/CW port (see the picture above).

It is only needed if you are experiencing problems with PTT or CW outputs (for instance, delayed CW output, when “dit-dah” becomes “dah-dah”). The default settings are OK in most cases.

Please re-plug the MixW RigExpert Tiny device for this change to take effect.

- Once the drivers are properly installed and configured (see the corresponding guides above), connect audio cables to your computer sound card. Plug the SPK connector into SPEAKER (or LINE OUT) socket, and then plug MIC connector into MICROPHONE (or LINE IN) socket of your sound card.
- Turn off transceiver power, then connect remaining cables to the transceiver sockets according to the cable labels.
- Now turn on the transceiver. MixW RigExpert Tiny is ready to operate!

Setting up software to operate using MixW RigExpert Tiny

There are few settings that have to be done (or verified) in the software once the MixW RigExpert Tiny device is plugged in and the drivers are installed.

(Please see the software setup examples on the following pages.)

CAT system

- In the software, select a CAT port to match the MixW RigExpert Tiny Serial Port number which appears in Device Manager (see the driver installation guide).
- Set up baudrate, stop bits and parity parameters according to your transceiver manual.
- RTS and DTR behavior is not significant, since MixW RigExpert Tiny does not use these lines at CAT port.

PTT and CW outputs

- In the software, select a PTT/CW port to match the MixW RigExpert Tiny Serial Port number which appears in Device Manager (see the driver installation guide).
- Set RST line to match the PTT output.
- Set DTR line to match the CW output.
- Baudrate, parity and other port settings are not significant.

Audio in/out

- In the sound card software, select a sound card the device is connected to (some programs can only work with so-called preferred sound card, which is selected via Control Panel, so there is no such a selection there).
- Adjust input and output volume using Windows Volume Control program. This procedure is well-described in various documents and publications, and is better done when the whole system is set up.

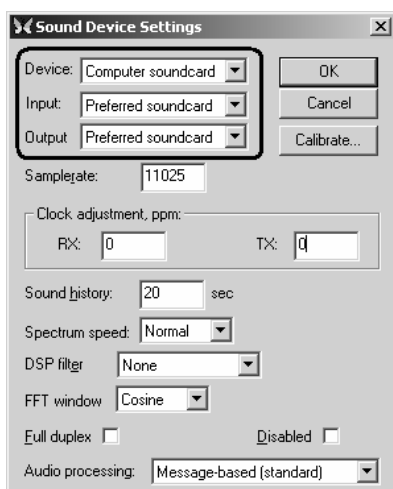
Important:

Please remember that since CAT and PTT/CW lines are located on *two different* COM ports, software *should* also be set to use separate ports for CAT and PTT/CW outputs.

Also, please make sure the transceiver is set up properly. For Icom transceivers, check the CI-V address to correspond the software setting. Switch Yaesu transceivers into the PKT mode if your MixW RigExpert Tiny is plugged into the transceiver PACKET connector.

1. Perform audio in/out settings

1a. Go to *Configure - Sound device setting* menu.

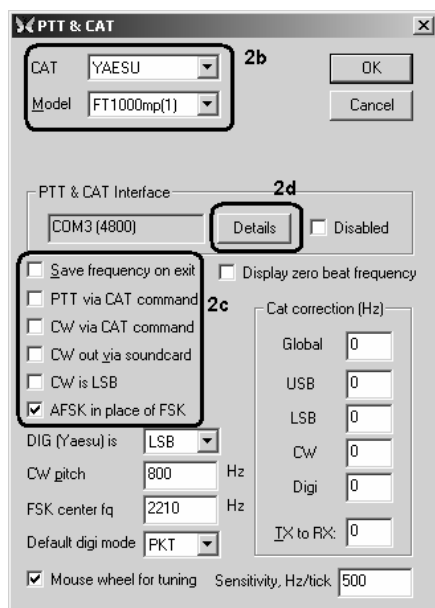


1b. In the *Sound Device Settings* dialog, select **Computer soundcard** as a device, then select Input and Output. Usually, this will be **Preferred soundcard** for both cases.

1c. Change other settings in this dialog according to MixW 2 manual, if you wish.

2. Set up CAT system

2a. Go to *Configure - TRCVR CAT/PTT* menu to open the PTT&CAT dialog.



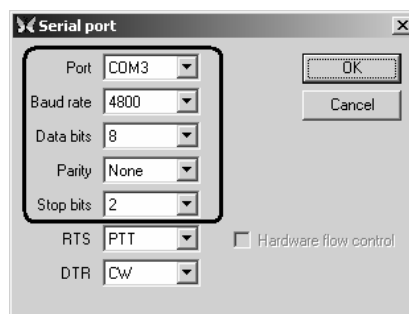
2b. Select your transceiver type and model.

2c. Review the additional settings:

PTT via CAT command, **CW via CAT command** and **CW out via soundcard** should be unchecked, since MixW RigExpert Tiny provides "hardware" PTT and CW outputs.

AFSK in place of FSK should be checked, as the device does not have FSK output.

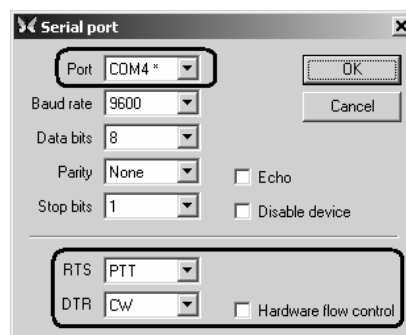
2d. Change other settings according to MixW manual, if you wish. Then click **Details** to configure serial port.



2e. In the *Serial Port* dialog, select **Port** to match the MixW RigExpert Tiny CAT Port (see the driver installation guide to find out which port is a CAT port), then set other parameters according to your transceiver manual.

3. Set up PTT and CW outputs

3a. Go to *Configure - Secondary PTT port - Port settings menu*.



3b. In the *Serial port* dialog, select **Port** to match the MixW RigExpert Tiny PTT/CW Port (see the driver installation guide to find out which port is a PTT/CW port).

3c. Uncheck **Hardware flow control** and select RTS line as **PTT** and DTR line as **CW**. Other settings have no effect with RigExpert Tiny.

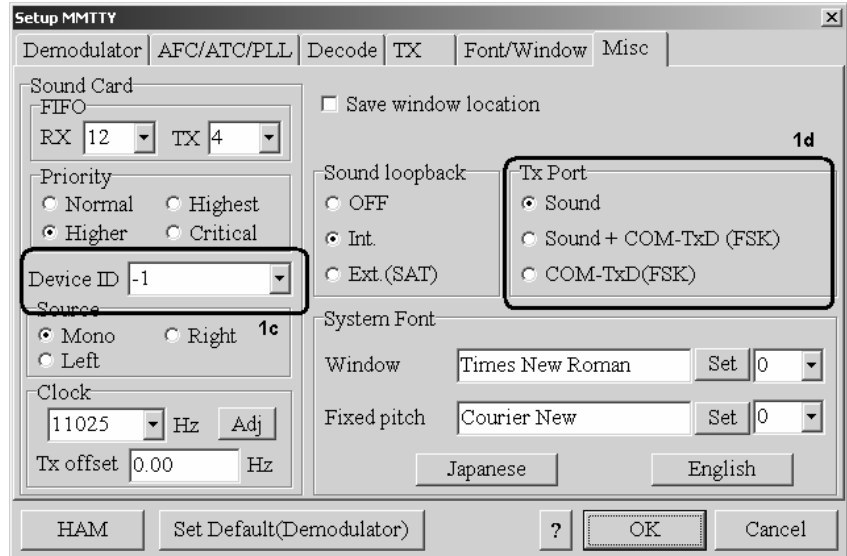
1. Perform audio in/out settings

1a. In MMTTY, go to **Options** – **Setup MMTTY** menu.

1b. In the **Setup MMTTY** dialog, select the **Misc** tab.

1c. Select the **Device ID** to match the sound card the device is connected to. Normally, this will be **-1** (default sound card).

1d. Select **Sound** as a **Tx Port**. This setting will let MMTTY transmit RTTY via the sound card.

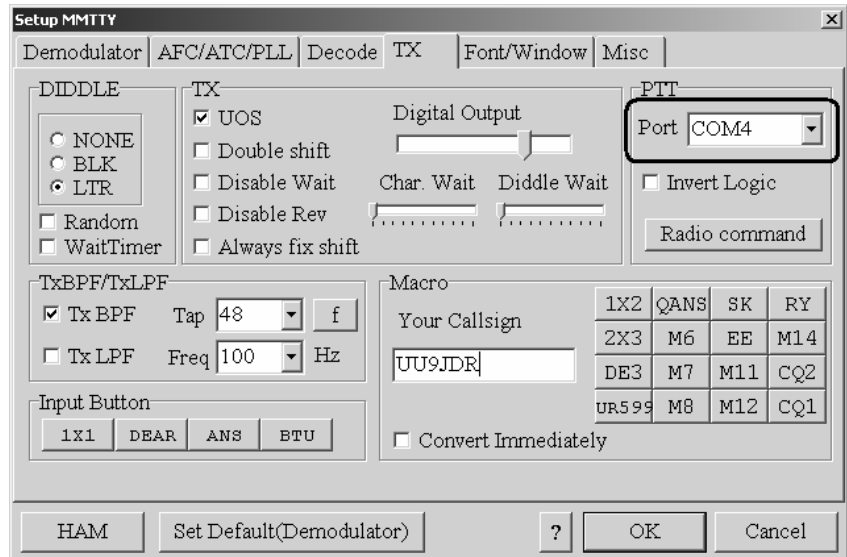


2. Set up PTT and CW outputs

2a. In the **Setup MMTTY** dialog, select the **TX** tab.

2b. Choose the Port in the PTT area to match the MixW RigExpert Tiny PTT/CW Port (see the driver installation guide to find out which port is a PTT/CW port).

2c. Perform other settings according to the MMTTY manual, if needed.



3. Set up CAT system

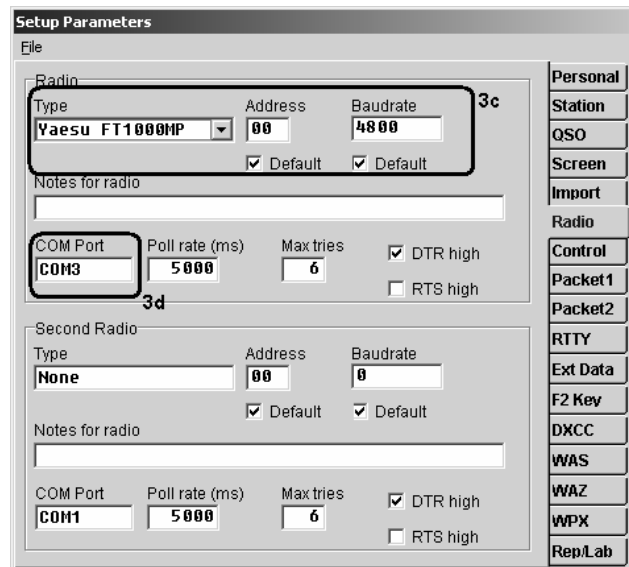
3a. In the DX4WIN software, go to **File** – **Preferences** menu.

3b. In the **Setup Parameters** dialog, open the **Radio** tab.

3c. Select your transceiver **Type** and parameters according to the transceiver manual.

3d. Select **COM Port** to match the MixW RigExpert Tiny CAT Port (see the driver installation guide to find out which port is a CAT port).

3e. Perform other settings according to the DX4WIN manual, if needed.



Official distributors

- USA & worldwide
Glenn Wetherell
Rig Technologies
61 Krouse Court
Aberdeen, Maryland 21001, USA
e-mail: info@rigexpert.com
web: www.rigexpert.com
- Canada & worldwide
Yuri Onipko
Rig Expert Canada
66 Cavell Ave.
Toronto, ON, M8V 1P2, Canada
e-mail: mixw@sympatico.ca
web: www.rigexpert.net
- UK, Europe & worldwide
Konstantine Kisselev
KMK UK Limited, England
e-mail: mixw@mixw.co.uk
web: www.mixw.co.uk
- Germany, Austria & Switzerland
Rudolf Piehler
e-mail: info@mixw.de
web: www.rigexpert.de
- Russia & CIS
Arkady Grikurov
e-mail: rn6am@istnet.ru
- Ukraine, CIS & Baltic countries
Victor Tkachenko
e-mail: ut1ua@i.kiev.ua
web: ut1ua.narod.ru